

1. OUTLINE OF TRENCH EXCAVATION IS FOR ILLUSTRATIVE PURPOSES ONLY. ACTUAL TRENCH WIDTH AND SHAPE WILL VARY WITH SOIL CONDITIONS. TRENCH EXCAVATION SHALL BE IN ACCORDANCE WITH THE "FLORIDA TRENCH SAFETY ACT" AND OSHA TRENCH SAFETY STANDARDS.
2. TYPICAL TRENCH BACKFILL/BEDDING FOR WATER MAIN AND FORCE MAIN INSTALLATIONS SHALL BE CLASS "A" AS SHOWN IN DETAIL.
3. TYPICAL TRENCH BACKFILL/BEDDING FOR GRAVITY SEWER INSTALLATION SHALL BE CLASS "B" AS SHOWN IN DETAIL.
4. TRENCH BACKFILL/BEDDING CLASS "C" AND CLASS "D" SHALL BE USED FOR PIPE INSTALLATIONS WHERE UNSTABLE TRENCH MATERIALS ARE ENCOUNTERED.
5. TRENCH ZONE BACKFILL SHALL BE MATERIAL TYPE 1 OR TYPES A THRU H, OR ANY MIXTURE THEREOF, WHERE SURFACE RESTORATION TYPE "1" IS APPLICABLE, TRENCH ZONE BACKFILL SHALL BE PLACED IN 12" LIFTS, COMPACTED TO 90% OF THE MATERIAL'S MAXIMUM DENSITY AS DETERMINED BY ASTM D-697 (AASHTO T-99). WHERE SURFACE RESTORATION TYPES "2", "3" AND "4" ARE APPLICABLE, TRENCH BACKFILL SHALL BE PLACED IN 8" LIFTS COMPACTED TO 95% OF THE MATERIAL'S DENSITY AS DETERMINED BY ASTM D-698 (AASHTO T-99).
6. BEDDING MATERIAL FOR TYPICAL WATER MAIN AND FORCE MAIN INSTALLATION SHALL BE TYPE C. BEDDING SHALL BE COMPACTED TO 95% OF THE MATERIAL'S MAXIMUM DENSITY AS DETERMINED BY ASTM D-1557 (AASHTO T-180).
7. BEDDING MATERIAL FOR TYPICAL GRAVITY SEWER INSTALLATION AND ANY INSTALLATION WHERE UNSUITABLE TRENCH BOTTOM CONDITIONS ARE FOUND SHALL BE TYPE E. BEDDING SHALL BE PLACED IN LIFTS NOT TO EXCEED 6" AND COMPACTED TO 95% OF THE MATERIAL'S MAXIMUM DENSITY AS DETERMINED BY ASTM D-1557 (AASHTO T-180).
8. UNSUITABLE MATERIAL SHALL BE REMOVED TO UNDISTURBED ROCK OR SAND OR TO DEPTH AS SPECIFIED BY ENGINEER. BACKFILL MATERIAL SHALL BE TYPE C. BACKFILL SHALL BE PLACED IN 8" LIFTS COMPACTED TO 95% OF THE MATERIAL'S MAXIMUM DENSITY AS DETERMINED BY ASTM D-1557 (AASHTO T-180).

TRENCH BACKFILL / BEDDING NOTES

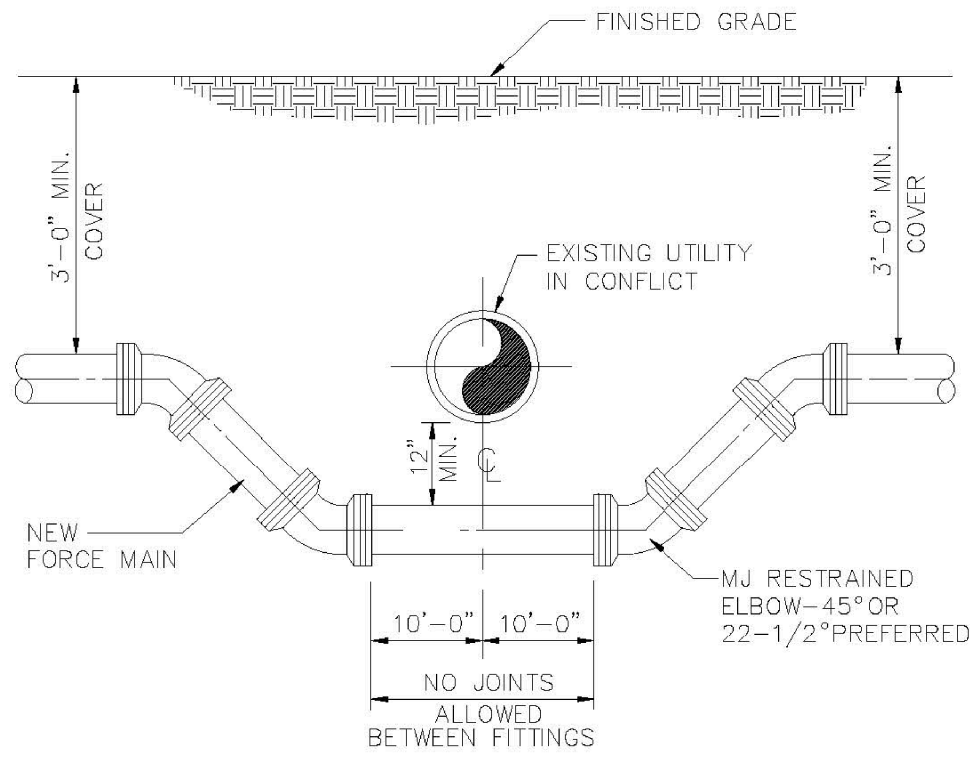
ENGINEERING STANDARDS 2022				
REVISIONS		ENGINEERING DIVISION	TRENCH BACKFILL / BEDDING	DATE: JUNE 2022 DWG. NO.
BY	DATE			
		CITY OF POMPAÑO BEACH		
		SCALE: N.T.S.		203-3

9. BEDDING TYPES — THE FOLLOWING TYPES OF SUITABLE MATERIALS ARE DESIGNATED AND DEFINED AS FOLLOWING:
- TYPE A: CRUSHED LIMEROCK OR SAND WITH 100 PERCENT PASSING A 1 INCH SIEVE AND A SAND EQUIVALENT VALUE NOT LESS THAN 50.
- TYPE B: CRUSHED LIMEROCK OR SAND WITH 100 PERCENT PASSING A 1/2 INCH SIEVE AND A SAND EQUIVALENT VALUE NOT LESS THAN 50.
- TYPE C: SAND WITH 100 PERCENT PASSING A 3/8 INCH SIEVE, AT LEAST 90 PERCENT PASSING A NUMBER 4 SIEVE, AND A SAND EQUIVALENT VALUE NOT LESS THAN 30.
- TYPE D: CRUSHED LIMEROCK WITH 100 PERCENT PASSING A 1 INCH SIEVE AND NOT MORE THAN 10 PERCENT A NUMBER 4 SIEVE.
- TYPE E: CRUSHED LIMEROCK OR SAND WITH 100 PERCENT PASSING A 3/4 INCH SIEVE AND NOT MORE THAN 10 PERCENT PASSING A NUMBER 4 SIEVE.
- TYPE F: CRUSHED LIMEROCK MEETING THE FOLLOWING GRADATION REQUIREMENTS.

SIEVE SIZE	PERCENTAGE PASSING
2 INCH	100
1-1/2 INCH	90-100
1 INCH	20-55
3/4 INCH	0-15
NO. 200	0-3

TRENCH BACKFILL / BEDDING NOTES

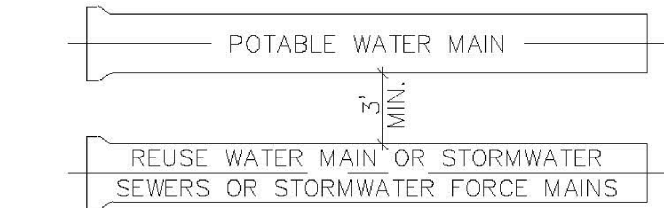
ENGINEERING STANDARDS 2022				
REVISIONS		ENGINEERING DIVISION	TRENCH BACKFILL / BEDDING	DATE: JUNE 2022 DWG. NO.
BY	DATE			
		CITY OF POMPAÑO BEACH		
		SCALE: N.T.S.		203-4



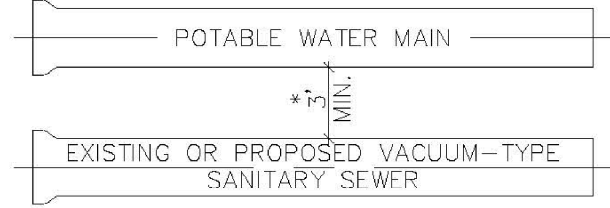
NOTES:
WHERE CONDITIONS PERMIT, PIPE OFFSETS MAY BE USED INSTEAD OF BENDS TO OBTAIN THE MINIMUM CLEARANCE.
FACTORY OFFSETS MAY BE USED.

TYPICAL CONFLICT DETAIL

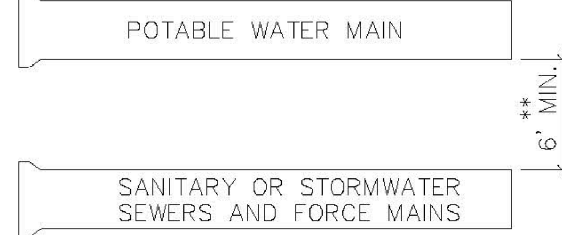
ENGINEERING STANDARDS 2022				
REVISIONS		ENGINEERING DIVISION	TYPICAL CONFLICT (SEWER)	DATE: JUNE 2022 DWG. NO.
BY	DATE			
S.S.	JUNE 2008	CITY OF POMPAÑO BEACH		
S.S.	02/13/12			
		SCALE: N.T.S.		206-1



A MINIMUM HORIZONTAL SEPARATION 3' (OUTSIDE TO OUTSIDE), SHALL BE MAINTAINED BETWEEN POTABLE WATER MAINS AND STORMWATER SEWERS, STORMWATER FORCE MAINS AND REGULATED REUSE WATER MAINS.



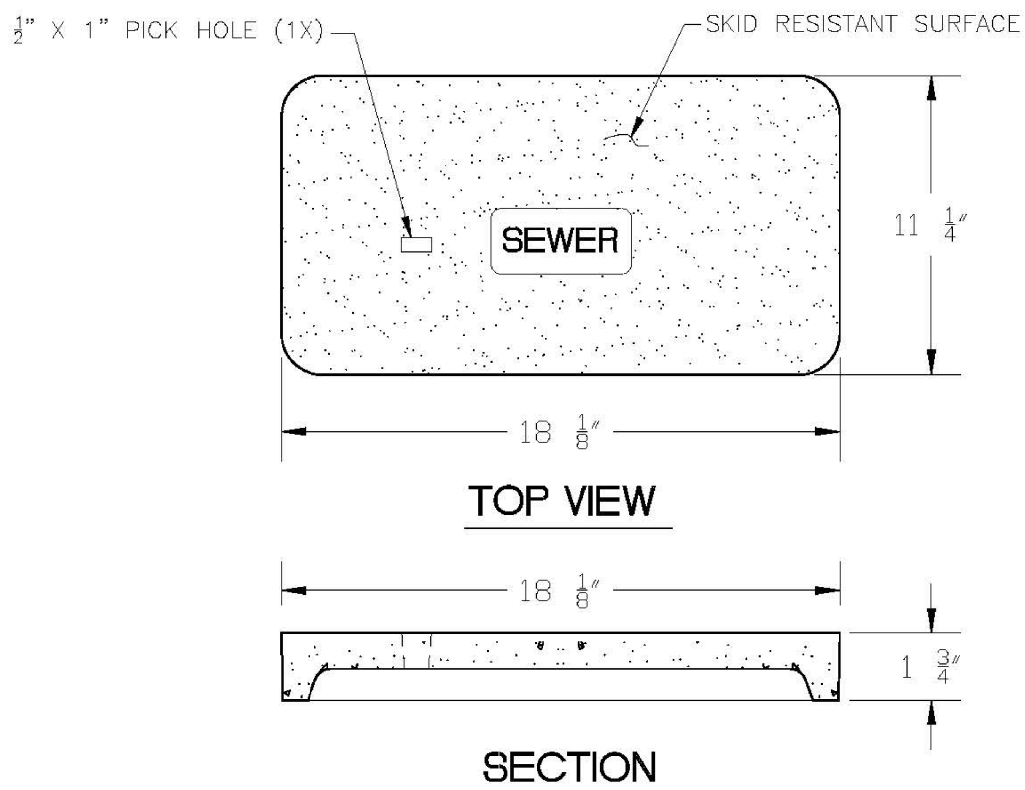
A MINIMUM HORIZONTAL SEPARATION 3' (OUTSIDE TO OUTSIDE), SHALL BE MAINTAINED BETWEEN EXISTING OR PROPOSED VACUUM-TYPE SANITARY SEWER. * SEE NOTE D(1)(B).



A MINIMUM HORIZONTAL SEPARATION OF 6' (OUTSIDE TO OUTSIDE), SHALL BE MAINTAINED BETWEEN POTABLE WATER MAINS AND EXISTING OR PROPOSED GRAVITY-OR PRESSURE TYPE SANITARY SEWER, WASTEWATER FORCE MAIN OR NOT REGULATED REUSE WATER MAIN. ** SEE NOTE D(1)(C).

MINIMUM HORIZONTAL SEPARATION REQUIREMENTS FOR POTABLE WATER, REUSE, STORMWATER AND SEWER LINES

ENGINEERING STANDARDS 2022				
REVISIONS		ENGINEERING DIVISION	MIN. HORIZONTAL SEPARATION FOR SANITARY SEWER	DATE: JUNE 2022 DWG. NO.
BY	DATE			
S.S.	01/30/12	CITY OF POMPAÑO BEACH		
		SCALE: N.T.S.		209-1

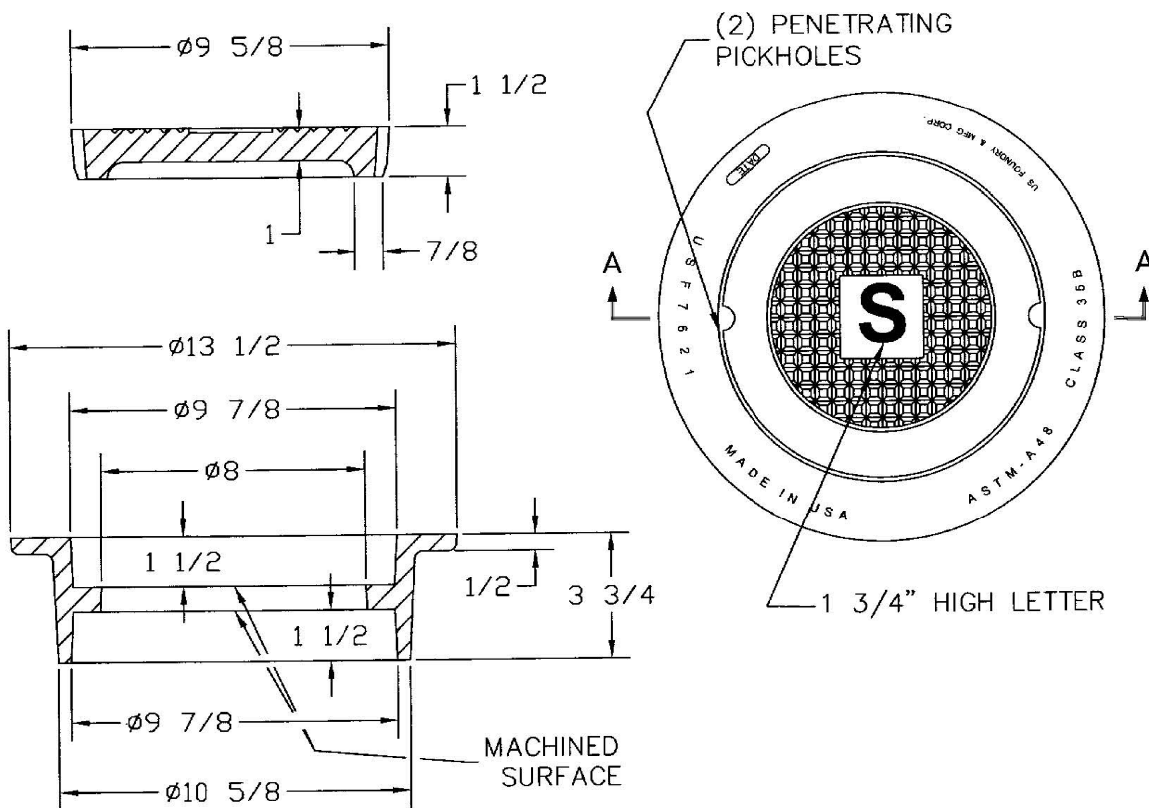


- NOTE
1. MATERIAL: FIBERGLASS REINFORCED POLYMER CONCRETE & FIBERGLASS REINFORCED POLYMER
 2. COLOR: GREEN
 3. LOAD RATING: A8 (ASTM C857)
 4. LOGO: SEWER

SEWER BOX AND COVER

PRODUCT RATING - TRAFFIC					
LOAD DESIGNATION	DESCRIPTION	DESIGN LOADS		TESTING	
		LIVE LB/WHEEL (2)	IMPACT PSF (3)	LOAD/LBS	SAFETY FACTOR
AASHTO H15	MEDIUM TRUCK TRAFFIC	12,000	15,600	N/A	2.25

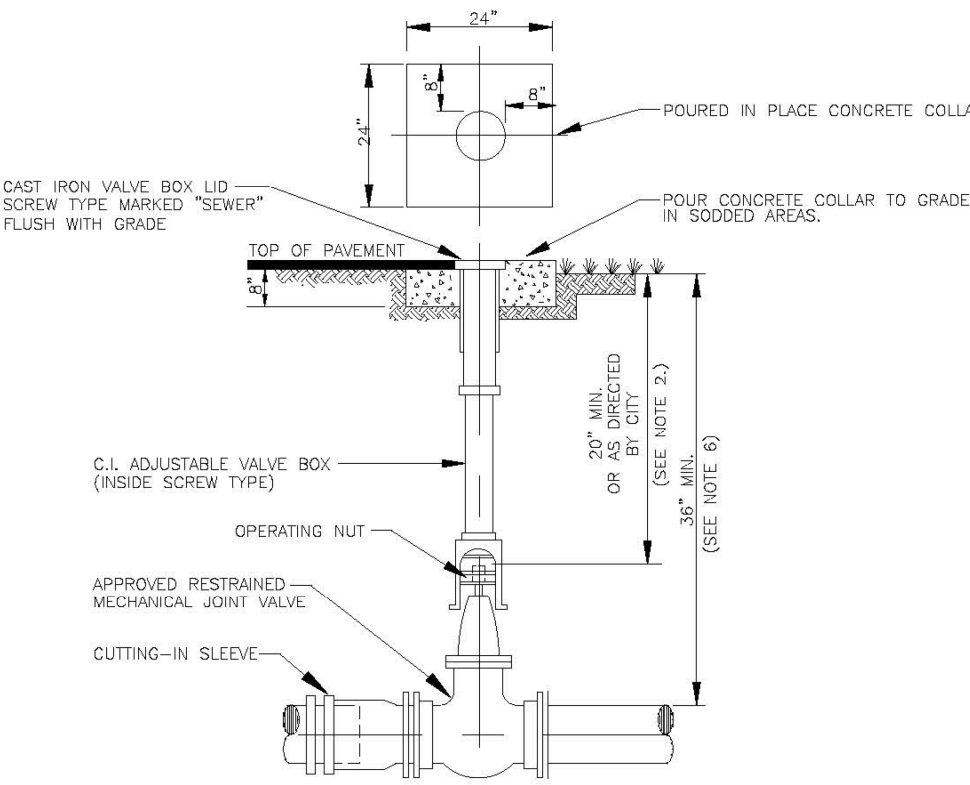
ENGINEERING STANDARDS 2022				
REVISIONS		ENGINEERING DIVISION	SEWER BOX AND COVER CDR Part No. WB04-1118-12 CDR Part No. WC02-1118-02	DATE: JUNE 2022 DWG. NO.
BY	DATE			
		CITY OF POMPAÑO BEACH		
		SCALE: N.T.S.		210-2



NOTE
MATERIAL: Gray Cast Iron
ASTM-A48 Class 35B

SEWER BOX AND COVER - HEAVY TRAFFIC

ENGINEERING STANDARDS 2022				
REVISIONS		ENGINEERING DIVISION	SEWER BOX AND COVER HEAVY TRAFFIC	DATE: JUNE 2022 DWG. NO.
BY	DATE			
S.S.	12/06/18	CITY OF POMPAÑO BEACH		
		SCALE: N.T.S.		210-3



- NOTES:
1. CONCRETE COLLAR IS NOT REQUIRED IN PAVED AREAS IF PAVEMENT SURFACE IS FINISHED PRIOR TO CONDITIONAL FINAL INSPECTION.
 2. WHEN OPERATING NUT IS DEEPER THAN 36", A ONE PIECE EXTENSION WILL BE REQUIRED TO BRING OPERATING NUT 20"-30" BELOW FINISHED GRADE. EXTENSION BOLTS & NUTS ARE TO BE STAINLESS STEEL. A HIGH STRENGTH STEEL CENTERING PLATE, WELDED TO THE EXTENSION, IS ALSO REQUIRED.
 3. VALVE BOXES SHALL HAVE COVERS MARKED "SEWER".
 4. EXTENSION VALVE BOX TO BE D.I.P. OR C-800 PVC OR 18" (COLOR: GREEN)
 5. A CUT-IN INSTALLATION SHALL REQUIRE MEGALUGS OR EQUAL THROUGHOUT ASSEMBLY.
 6. IN ORDER TO MAINTAIN ADEQUATE COVER OVER VALVE NUT, THE FOLLOWING MINIMUM COVERS OVER PIPE ARE REQUIRED

GATE VALVE SIZE	MIN. COVER OVER PIPE
18"	48"
20"	54"
24"	60"
30"	72"
36"	84"

FORCE MAIN PLUG VALVE SETTING

ENGINEERING STANDARDS 2022				
REVISIONS		ENGINEERING DIVISION	PLUG VALVE SETTING	DATE: JUNE 2022 DWG. NO.
BY	DATE			
S.S.	01/27/12	CITY OF POMPAÑO BEACH		
		SCALE: N.T.S.		205-1



Know what's below.
Call before you dig.

CITY OF POMPAÑO BEACH
STANDARD SANITARY DETAILS

PALM AIRE TENNIS CENTER
RWB / LINARES ARCHITECTURE



DESIGNED: AMF	DATE: 10/2024	PUBLISHED: 4/8/2025, 10:48:55 AM
DRAWN: AMF	DATE: 10/2024	PROJECT NUMBER: 000922036
CHECKED: BMP	DATE: PZ23-120	SHEET: SD2 OF 2